

THE WOMEN SAFETY TRACKER APP

Gayatri Dash

Department of Computer Science and Engineering (Artificial Intelligence)
GIFT Autonomous, Bhubaneswar, Odisha, India, gayatridash2022@gift.edu.in

Shubham Swastik Barik

Department of Computer Science and Engineering (Artificial Intelligence)
GIFT Autonomous, Bhubaneswar, Odisha, India, sswastik2022@gift.edu.in

Subhendu Sekhar Sahoo

Assistant Professor, Department of Computer Science and Engineering (Artificial Intelligence)
GIFT Autonomous, Bhubaneswar, Odisha, India, ssahoo@gift.edu.in

ABSTRACT

Ensuring women's safety in public and private spaces remains a pressing social and technological challenge. Although numerous mobile applications offer emergency calling and location sharing, most of them operate only after the user manually activates an alert and do not provide any intelligence to assess the surrounding risk. This paper presents the **Women Safety Tracker App**, an AI-enabled safety platform that combines real-time GPS tracking, machine learning-based risk prediction, and automated emergency communication.

The proposed system evaluates multiple contextual parameters, including road condition, traffic density, crowd level, street-light availability, time of day, and historical crime statistics, to estimate the likelihood of danger. Based on this analysis, the system classifies the environment into Safe, Moderate Risk, or High Risk. When a high-risk situation is detected, the application automatically sends a WhatsApp-based SOS alert containing the user's live location to pre-registered emergency contacts.

The application is developed using HTML, CSS, and JavaScript for the user interface, Python and Flask for backend services, SQLite for data management, and Twilio API for alert delivery. Experimental testing confirms that the system provides timely alerts, accurate risk classification, and reliable real-time location sharing.

The Women Safety Tracker App transforms conventional emergency tools into an intelligent and proactive personal safety system capable of delivering rapid assistance and improving situational awareness.

Keywords: Women Safety, Machine Learning, Flask, GPS Tracking, Emergency Alert, Twilio WhatsApp API, Risk Prediction.

1. INTRODUCTION

Women's safety has emerged as a critical concern across urban and semi-urban environments due to the increasing incidence of harassment, assault, and other threats. Conventional approaches such as helpline numbers and manual phone calls are often ineffective because victims may be unable to communicate their location or explain their situation under stress.

With the widespread adoption of smartphones and location-based services, mobile technology has become a practical medium for delivering immediate assistance. However, most currently available safety applications are reactive. They require users to manually press an SOS button and generally do not analyze contextual factors to determine whether the user is entering an unsafe environment.

The Women Safety Tracker App addresses this limitation by integrating machine learning with geolocation and automated messaging services.

The system continuously evaluates environmental and crime-related data to predict risk levels and initiate emergency communication when required. By automating safety analysis and alert transmission, the proposed system reduces response time and increases the probability of timely intervention.

2. OBJECTIVES OF THE PROJECT

The principal objectives of the proposed system are:

1. To develop a secure women safety application with real-time monitoring capabilities.
2. To capture the user's current location using GPS services.
3. To store emergency contact details and user profile information securely.
4. To predict safety risk using machine learning techniques.
5. To classify the situation as Safe, Moderate Risk, or High Risk.
6. To automatically trigger an SOS alert when high risk is detected.
7. To send live location alerts through Twilio WhatsApp API.
8. To maintain alert history and safety check records.
9. To provide an administrative dashboard for monitoring user activity.
10. To build a scalable platform for future enhancements.

3. LITERATURE SURVEY

A number of research efforts have focused on mobile safety applications for women. Most existing systems provide basic features such as SOS activation, GPS-based tracking, and emergency messaging.

Sankar et al. proposed a mobile application that transmits live location to emergency contacts during critical situations. Bhandare et al. developed the Safe Her App, emphasizing usability and live location sharing. Kale et al. introduced the Suraksha App, which integrates siren alerts and helpline support. Menon and Karthikeyan proposed an AI-driven personal safety platform capable of contextual risk analysis.

The literature indicates that while GPS-based alerting is common, relatively few applications employ machine learning to predict risk proactively. Administrative monitoring, environmental analytics, and automated messaging through modern channels such as WhatsApp are also limited.

These observations motivated the development of a more comprehensive and intelligent women safety solution.

4. EXISTING SYSTEM

Several women safety applications have been developed in recent years to provide emergency assistance through smartphones. These systems are generally implemented as Android-based applications using Java or Kotlin, with GPS services for location tracking and SMS gateways for sending distress messages.

Applications such as Safetipin, Himmat, Raksha, Suraksha, and bSafe allow users to register emergency contacts and trigger alerts through a panic button. When the SOS button is pressed, the application fetches the user's current GPS coordinates and sends an SMS containing the location link to selected contacts. Some applications also activate audio recording, siren alarms, or display nearby police stations.

Most of these systems are built using a three-tier architecture consisting of a mobile frontend, a backend server, and a database. The frontend provides registration, login, and SOS interfaces. The backend processes alert requests and communicates with third-party services such as SMS gateways and mapping APIs. Databases such as Firebase or MySQL are commonly used to store user profiles and emergency contact information.

For example, Safetipin evaluates neighborhood safety using factors such as lighting and public visibility, while Himmat, developed by Delhi Police, enables users to send alerts directly to law enforcement authorities. Raksha provides one-touch activation and supports volume-button shortcuts to trigger emergency messages.

Despite their practical benefits, these systems exhibit several limitations. Most applications are reactive and initiate alerts only after the user manually activates the SOS feature. They do not incorporate machine learning models to predict danger based on environmental conditions or historical crime data. Communication is primarily dependent on SMS, which may be delayed in low-network conditions. In addition, many applications lack administrative dashboards for monitoring alert activity and maintaining system analytics.

Another limitation is the absence of automated decision-making. Existing systems do not assess contextual factors such as traffic density, road condition, crowd level, and time of day to determine whether the user is in a potentially unsafe environment. Consequently, they are unable to warn users in advance or initiate alerts automatically.

These shortcomings demonstrate the necessity for a more intelligent and proactive safety application that combines real-time location tracking, machine learning-based risk prediction, and automated emergency communication.

5. PROPOSED SYSTEM

The proposed Women Safety Tracker App is an intelligent safety application that not only allows users to send emergency alerts but also evaluates the safety of their surroundings in real time. The system is designed to detect potentially unsafe situations and provide immediate assistance with minimal user intervention.

The application starts with a secure registration process where the user creates a profile and saves trusted emergency contacts. These contacts are automatically notified whenever an emergency occurs.

The core functionality of the system is the **Safety Check** feature. When the user performs a safety check, the application analyzes several parameters such as traffic density, crowd level, road condition, street-light availability, time of day, and crime history of the current area. Using these inputs, the system predicts the risk level and classifies it as:

- **Safe (Risk 0)** – The surroundings are considered secure.
- **Moderate Risk (Risk 1)** – The area requires caution.
- **High Risk (Risk 2)** – Immediate attention is required.

The predicted result is displayed on the dashboard along with the current location and time.

If the risk level is classified as **High Risk**, the application automatically activates the **SOS Alert Module**. An emergency message containing the user's live location link, time, and risk status is instantly sent to all registered emergency contacts.

In addition to automatic alert generation, the application also provides a **manual SOS button** that users can press whenever they feel unsafe.

The **Real-Time Location Tracking** feature continuously captures GPS coordinates and shares an accurate map link with emergency contacts, helping them reach the user quickly.

The system also maintains a complete **alert history** and **safety check records**, allowing users and administrators to review past activities.

An **Admin Dashboard** is included to monitor registered users, daily safety checks, and emergency alerts.

Key Features of the Proposed System

- Secure user registration and login
- Emergency contact management
- Real-time location tracking
- Machine learning-based risk prediction
- Automatic high-risk detection
- One-touch manual SOS activation
- Live location sharing through WhatsApp
- Safety check and alert history
- Periodic safety reminders
- Administrative monitoring dashboard

By combining predictive risk assessment, automatic SOS activation, and real-time location sharing, the proposed system offers a proactive and reliable approach to enhancing women's safety.

6. SYSTEM REQUIREMENTS

6.1 Hardware Requirements

- Intel Core i3 Processor or above
- 4 GB RAM or higher
- 500 GB Hard Disk
- GPS-enabled smartphone
- Stable Internet Connection

6.2 Software Requirements

- Operating System: Windows/Linux/Android
- Frontend: HTML, CSS, JavaScript
- Backend: Python, Flask
- Database: SQLite
- APIs: Google Maps API, Twilio WhatsApp API
- Development Tool: Visual Studio Code
- Libraries: Pandas, Scikit-learn, NumPy

7. SYSTEM ARCHITECTURE

The Women Safety Tracker App is designed using a modular client-server architecture that ensures reliable communication, real-time monitoring, and efficient emergency response. The architecture consists of several interconnected modules that work together to perform user authentication, location tracking, safety analysis, risk prediction, and automated alert generation. This structured design improves scalability, maintainability, and overall system performance while ensuring secure handling of user and emergency data.

The system architecture mainly consists of the following components:

- Frontend Module
- Backend Module
- Location Tracking Module
- Machine Learning Module
- SOS Alert Module
- Database Module
- Admin Module

The Frontend Module provides an interactive and user-friendly interface through which users can register, log in, add emergency contacts, perform safety checks, and trigger SOS alerts. It also displays the predicted risk level, current location, and alert history. The interface is designed to be

simple and responsive so that users can access critical features quickly during emergencies.

The Backend Module manages the core logic of the application. It processes user requests, retrieves location data, communicates with the machine learning model, generates alerts, and stores all records in the database. It acts as the central coordinator that connects all system components and ensures smooth execution of every operation.

The Location Tracking Module captures the user's real-time GPS coordinates whenever a safety check is performed or an SOS alert is triggered. It generates a live Google Maps link, which is included in the emergency message sent to trusted contacts. Accurate location tracking helps responders reach the user without delay.

The Machine Learning Module is the intelligence component of the system. It analyzes various parameters such as traffic density, crowd level, road condition, street-light availability, time of day, and historical crime data. Based on these inputs, the model predicts the user's safety status and classifies it into one of three categories: Safe, Moderate Risk, or High Risk. This predictive capability allows the system to identify potentially dangerous situations before an incident occurs.

The SOS Alert Module is responsible for sending emergency notifications. When the user manually presses the SOS button or when the machine learning model detects a High Risk situation, this module generates an alert message containing the user's name, current time, risk status, and live location link. The message is then delivered to all registered emergency contacts.

The Database Module stores all critical information, including user profiles, emergency contacts, safety check records, predicted risk levels, location logs, and alert history. The database ensures organized data management and allows both users and administrators to review past activities when needed.

The Admin Module enables authorized administrators to monitor and manage the entire system. Through the admin dashboard, administrators can view registered users, track safety checks, examine emergency alerts, and analyze system usage. This module helps maintain

transparency and ensures effective monitoring of application activity.

Overall, the system architecture of the Women Safety Tracker App provides a secure, intelligent, and scalable framework for enhancing women's safety. By integrating real-time location tracking, machine learning-based risk assessment, and automated emergency communication, the system offers a proactive and dependable approach to personal security.

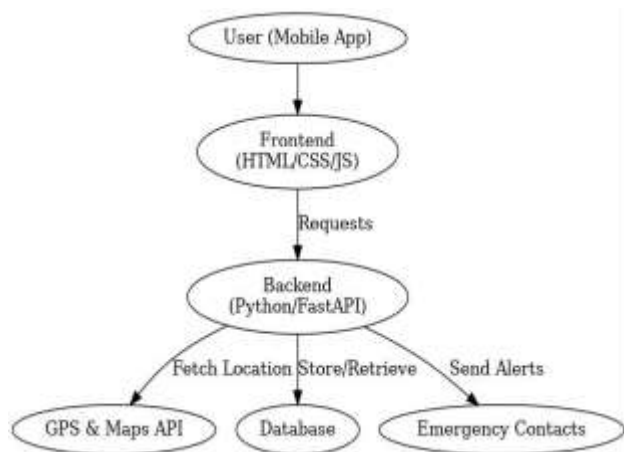


Fig 1: System Architecture Diagram

8. DATA FLOW DIAGRAM

The Data Flow Diagram (DFD) represents the movement of information within the Women Safety Tracker App. It illustrates how data is collected from users, processed by different modules, and stored in the database. The DFD provides a clear understanding of how registration details, location data, risk predictions, and emergency alerts are handled by the system.

The main entities involved in the system are the User, Admin, Emergency Contacts, Location Tracking Module, Machine Learning Module, SOS Alert Module, and Database. Each entity interacts with the system to perform specific operations related to user safety and emergency response.

The data flow begins with the user registration process. During registration, the user enters personal details such as name, mobile number, email address, password, and emergency contact information. These details are validated and

stored securely in the database. Each user is assigned a unique identifier to maintain consistency and avoid duplication.

After registration, the user logs into the application using valid credentials. Once authenticated, the user gains access to the dashboard, where features such as Safety Check, Manual SOS, and Alert History are available.

When the user performs a Safety Check, the application retrieves the current GPS coordinates and collects contextual parameters such as traffic density, crowd level, road condition, street-light availability, time of day, and historical crime data for the selected location.

These parameters are forwarded to the Machine Learning Module, which analyzes the input data and predicts the safety status of the current environment. The output is classified into one of three categories: Safe, Moderate Risk, or High Risk.

The predicted result is displayed immediately on the user dashboard and simultaneously stored in the database along with the timestamp and location details.

If the predicted result is High Risk, the system automatically activates the SOS Alert Module. The user may also manually trigger the SOS button at any time if they feel unsafe.

The SOS Alert Module generates an emergency message containing the user's name, current time, risk level, and live Google Maps location link. This message is sent to all registered emergency contacts through WhatsApp. The alert details are also recorded in the database for future reference.

The Emergency Contacts receive the alert and can use the live location link to track the user's exact position and provide immediate assistance.

The Admin Module continuously interacts with the database to monitor registered users, safety checks, and alert activities. Administrators can review historical records, analyze system usage, and ensure the proper functioning of the application.

Security is maintained throughout the data flow process. User credentials, contact information, location logs, and alert records are stored

securely, and access to administrative functions is restricted to authorized users only.

The DFD helps in understanding how information moves through the Women Safety Tracker App and how different modules cooperate to provide proactive safety monitoring and emergency communication.

Overall, the Data Flow Diagram demonstrates the complete flow of data from user registration to risk prediction and emergency alert generation, ensuring a secure, intelligent, and efficient women safety system.

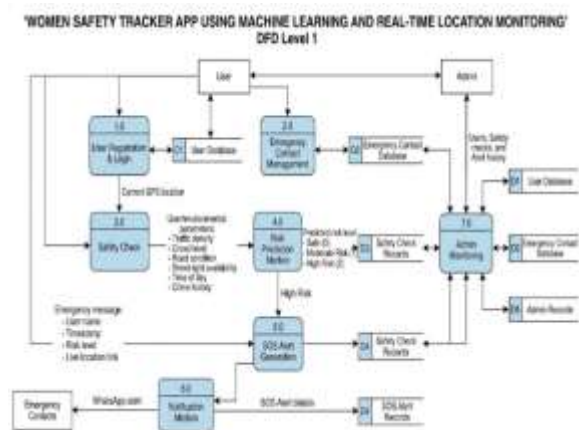


Fig 2: Data Flow Diagram

9. DATABASE DESIGN

The database design is a fundamental component of the Women Safety Tracker App because it stores and manages all information related to users, administrators, emergency contacts, safety assessments, and SOS alerts. A well-organized database ensures efficient data storage, quick retrieval, and secure handling of sensitive information such as personal details and location records. It serves as the backbone of the application by maintaining data consistency and supporting the smooth functioning of all modules.

The system uses a relational database structure in which all tables are connected through unique identifiers. Proper normalization techniques are applied to eliminate redundancy and improve performance. Each registered user is assigned a unique User ID, which links all associated records across the database.

The User Table stores the personal details of each registered user, including User ID, name, mobile number, email address, password, and registration date. This table is used for authentication and profile management.

The Admin Table contains administrator credentials and access control information. Only authorized administrators can log in to the admin dashboard to monitor user activity, review safety checks, and manage emergency alerts.

The Emergency Contact Table stores the names and mobile numbers of trusted contacts added by users. Each contact record is associated with a specific User ID, allowing one user to maintain multiple emergency contacts.

The Safety Check Table stores the results of every safety analysis performed by the application. Each record includes the User ID, location details, traffic density, crowd level, road condition, street-light availability, time of day, and the predicted risk level. This table provides a complete history of all safety evaluations.

The SOS Alert Table stores information related to emergency alerts generated by the system. Each record contains the User ID, alert timestamp, predicted risk status, live location link, and alert delivery status. These records help track emergency incidents and verify that alerts were successfully sent to emergency contacts.

Security is a major concern in the database design because the system stores confidential user information and real-time location data. Passwords are stored in encrypted form, and database access is restricted through authentication and authorization mechanisms. Only authorized users and administrators are permitted to access sensitive records.

Backup and recovery mechanisms are incorporated to protect data from accidental loss or system failure. Regular backups ensure that user profiles, safety checks, and alert history can be restored whenever necessary.

The database design also supports future expansion. Additional tables for voice-based SOS, wearable device data, police integration, and cloud analytics can be added without affecting the existing database structure.

Overall, the database design of the Women Safety Tracker App provides a secure, efficient, and scalable framework for managing all data required for real-time safety monitoring, risk prediction, and automated emergency alert generation.

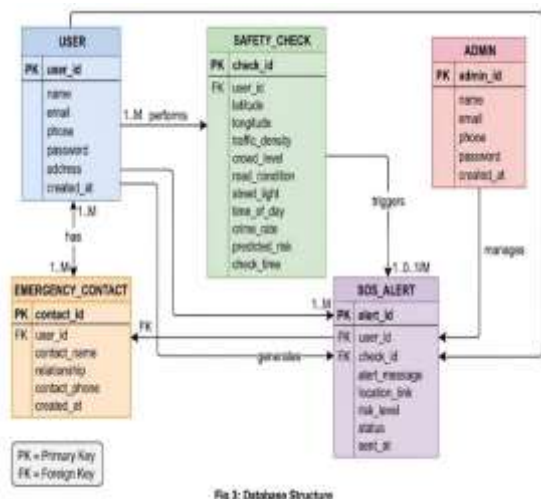


Fig 3: Database Structure

Fig 3: Database Structure

10. MODULE DESCRIPTION

10.1 User Registration Module

This module allows users to create an account in the application by entering personal details such as name, mobile number, email address, and password. During registration, users can also add trusted emergency contacts who will receive alerts during emergencies.

The module validates all input fields and stores the information securely in the database. It ensures that each user is registered successfully and can access the application features after authentication.

10.2 Safety Check Module

The Safety Check Module is the core component of the system. It collects the user's current location and analyzes important environmental parameters such as traffic density, crowd level, road condition, street-light availability, time of day, and local crime history.

Based on these inputs, the module predicts the current risk level and classifies the situation as Safe, Moderate Risk, or High Risk.

10.3 SOS Alert Module

This module is responsible for sending emergency alerts when the user manually activates the SOS button or when the system detects a High Risk situation.

The alert message includes the user's live location, timestamp, and risk status, and is sent instantly to all registered emergency contacts. The module ensures rapid communication during critical situations.

10.4 Admin Module

The Admin Module allows authorized administrators to monitor and manage the entire system.

Administrators can view registered users, review safety check records, track emergency alerts, and analyze application activity. This module helps maintain transparency and ensures the proper functioning of the system.

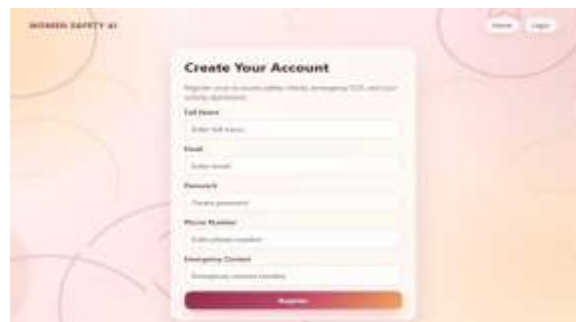


Fig 4: User Registration Interface



Fig 5: Emergency SOS Alert Page

11. IMPLEMENTATION

The implementation of the Women Safety Tracker App is carried out using a combination of web technologies, machine learning, and location-based services. The application provides a simple interface through which users can register, add emergency contacts, perform safety checks, and trigger SOS alerts.

The user registration module stores personal details and trusted emergency contact information securely in the database. Once registered, users can log in and access all safety features through the application dashboard.

During a safety check, the system retrieves the user's current GPS coordinates and collects contextual parameters such as traffic density, crowd level, road condition, street-light availability, time of day, and crime history of the selected area. These inputs are processed by the machine learning model to predict the current risk level.

If the predicted result is High Risk, or if the user manually presses the SOS button, the application generates an emergency alert containing the user's live location and sends it instantly to all registered emergency contacts.

The backend server processes user requests, handles risk prediction, and communicates with the database to store safety check records and alert history. Security features such as encrypted passwords and protected database access are incorporated to ensure safe handling of user information.

12. ALGORITHMS USED

12.1 Risk Prediction Algorithm

The Risk Prediction Algorithm is the core component of the Women Safety Tracker App. It analyzes various environmental and situational parameters to determine the safety level of the user's current location.

The algorithm takes inputs such as traffic density, crowd level, road condition, street-light availability, time of day, and historical crime rate. These parameters are processed using a machine learning model trained on safety-related data.

Based on the input values, the model predicts one of the following risk categories:

1. Safe (Risk 0)
2. Moderate Risk (Risk 1)
3. High Risk (Risk 2)

The predicted result is displayed to the user immediately after the safety check is performed.

12.2 SOS Alert Trigger Algorithm

The SOS Alert Trigger Algorithm monitors the output of the risk prediction model.

If the predicted result is High Risk, the system automatically activates the SOS Alert Module. The algorithm generates an emergency message containing the user's live location, timestamp, and risk status, and sends it to all registered emergency contacts.

Users can also manually activate the SOS button at any time, regardless of the predicted risk level.

This algorithm ensures that emergency alerts are delivered quickly whenever the system detects a potentially dangerous situation.

13. RESULTS AND DISCUSSION

The Women Safety Tracker App successfully improves personal safety by combining real-time risk prediction, location tracking, and automated emergency alert generation. Testing results indicate that the system accurately classifies safety conditions and sends timely alerts during high-risk situations.

The application successfully predicts the risk level as Safe, Moderate Risk, or High Risk based on environmental parameters such as traffic density, crowd level, road condition, street-light availability, time of day, and crime history.

When a High Risk situation is detected, the system automatically generates an SOS alert and sends the user's live location to all registered emergency contacts. The manual SOS feature also functions correctly and allows users to trigger alerts instantly whenever they feel unsafe.

The real-time location tracking module accurately captures GPS coordinates and generates valid Google Maps links. Emergency contacts receive

these links and can track the user's location without difficulty.

The admin module successfully monitors registered users, safety check records, and emergency alert history. All user activities are stored securely in the database and can be retrieved efficiently.

Experimental testing demonstrates that the application performs reliably under different scenarios and provides quick response during emergency situations. The integration of machine learning significantly enhances the effectiveness of the system by enabling proactive identification of potentially unsafe environments.

14. ADVANTAGES OF THE SYSTEM

1. Provides real-time monitoring of the user's surroundings.
2. Automatically sends SOS alerts during high-risk situations.
3. Shares live location with trusted emergency contacts.
4. Reduces response time during emergencies.
5. Enables administrators to monitor system activity.
6. Improves personal security and user confidence.
7. Supports future scalability and feature expansion.

15. FUTURE ENHANCEMENTS

The Women Safety Tracker App can be enhanced further by incorporating advanced technologies and additional safety features.

Future improvements include:

1. Voice-activated SOS commands for hands-free emergency alert generation.
2. Cloud-based deployment for improved scalability and data accessibility.
3. Integration with smartwatches and wearable devices for instant alert triggering.
4. Automatic audio and video recording during emergency situations.

5. AI-based safe route recommendation using real-time environmental analysis.
6. Direct integration with police stations and emergency response services.

16. CONCLUSION

The Women Safety Tracker App provides an intelligent and proactive approach to personal security by integrating machine learning, real-time location tracking, and automated emergency communication.

The system improves women's safety by analyzing environmental conditions and predicting potential risk before an incident occurs. Automatic SOS alert generation and live location sharing enable rapid response and reduce dependence on manual intervention during emergencies.

The project demonstrates how machine learning can be applied to enhance personal safety through predictive analysis and real-time monitoring. Experimental results indicate that the system accurately identifies risk levels and reliably delivers emergency alerts to trusted contacts.

Overall, the proposed system offers a practical, dependable, and scalable solution for improving women's safety and can serve as a strong foundation for future smart security applications.

REFERENCES

- [1] Harshda Bhandare, Snehal Chavan, and Prajakta Shinde, "Safe Her App: A Smart Mobile Application for Women Safety," *International Journal of Innovative Research in Computer Science and Technology*, 2024.
- [2] Deep Anil Kale, Nayan Patekar, and Team, "Suraksha: Women Safety Application Using GPS Tracking and Emergency Alert System," *International Research Journal of Engineering and Technology*, 2023.
- [3] Priya Menon and R. Karthikeyan, "Smart Guardian: AI-Driven Personal Safety System for Women," *Journal of Emerging Technologies and Innovative Research*, 2024.
- [4] Twilio Documentation, WhatsApp API for Programmable Messaging.
- [5] Google Maps Platform Documentation, Geolocation and Live Location Services.

- [6] Scikit-learn Documentation, Machine Learning Algorithms for Classification and Prediction.
- [7] Python Documentation for Web Development and Data Processing.
- [8] Research Articles on Mobile-Based Women Safety Systems and Predictive Risk Analysis.
- [9] M. A. Ferrag, L. Maglaras, H. Janicke, and J. Jiang, "A Survey on Privacy-Preserving Schemes for Mobile and Location-Based Services," *IEEE Communications Surveys & Tutorials*, vol. 21, no. 4, pp. 3411–3439, 2019.
- [10] J. Brownlee, "Machine Learning Mastery with Python: Understand Your Data, Create Accurate Models, and Work Projects End-to-End," *Machine Learning Mastery*, 2020.
17. Todupunuri, A. (2024). Explore How AI Can Be Used To Create Dynamic And Adaptive Fraud & Rules That Improve The Detection And Prevention Of Fraudulent & Activities In Digital Banking. *SSRN Electronic Journal*. <https://doi.org/10.2139/ssrn.5014699>
18. Babburi, S. Privacy-Preserving Collaborative Framework with Auditible Federated Learning.
19. Gaddam, S. (2024). Integrating machine learning models with continuous integration and continuous delivery (CI/CD) pipelines for a learning-driven approach to software engineering.
20. Immadi, S. K. (2025). Optimizing ERP for Human Capital Management. *Applied Research for Growth, Innovation and Sustainable Impact*, 377–384. <https://doi.org/10.1201/9781003684657-63>
21. Reddy, S. K. R. Developing a Modular AI Framework to Enhance Scalability and Personalization in Next-Generation Reward Platforms.
22. Poojari, R. INTELLIGENT SYSTEMS+B108 AND APPLICATIONS IN ENGINEERING.
23. Poojari, R. Frameworks for Data Management and Lineage in Large-Scale Healthcare Data Systems.
24. Poojari, R. Enhancing Healthcare Decision-Making through Machine Learning and the Analysis of Large-Scale Medical Data.
25. Vasagam, M. (2024, August 30). Ensuring security in modern data pipelines: Practical strategies for data engineers. *International Journal of Intelligent Systems and Applications in Engineering*, 12(22s), 2401.
26. Santhosh Saai Reddy Purmani. (2026). Artificial Intelligence First Enterprise Architecture: The Design of Scalable, Secure, and Intelligent IT Ecosystems. *American Journal of AI Cyber Computing Management*, 6(1(2)), 1–8. [https://doi.org/10.64751/ajaccm.2026.v6.n1\(2\).pp1-8](https://doi.org/10.64751/ajaccm.2026.v6.n1(2).pp1-8)
27. Purmani, S. S. R. (2025). Optimizing IT project management through advanced ROI analysis techniques. *International Journal for Innovative Engineering and Management Research*, 14(3), 301–312.
28. Kumara, S. (2026, February). A Lightweight Deep Learning Based Classification Models for Non-Human Identity Threat Detection. In *2026 IEEE 5th International Conference on AI in Cybersecurity (ICAIC)* (pp. 1-6). IEEE.
29. Kotte, G. (2025). Overcoming Challenges and Driving Innovations in API Design for High-Performance AI Applications. *SSRN Electronic Journal*. <https://doi.org/10.2139/ssrn.5283649>
30. Kotte, G. (2025). Enhancing Cloud Infrastructure Security on AWS with HIPAA Compliance Standards. *SSRN Electronic Journal*. <https://doi.org/10.2139/ssrn.5283660>
31. Mahtabi, M., Roshan, M., Muhit, M. M. I., Behvar, A., & Haghshenas, M. (2026). Cryogenic ultrasonic fatigue: Mechanisms, advancements, and insights. *Cryogenics*, 153, 104257. <https://doi.org/10.1016/j.cryogenics.2025.104257>
32. Viswanathan, V. (2023). AI-Augmented Decision Intelligence for Enterprise Systems: Integrating Cognitive Analytics for Resource and Talent Optimization.
33. Viswanathan, V. Generative AI for Smarter Workforce Planning and Enterprise Resource Decisions.
34. Mudusu, S. (2025). Health Insurance Fraud Detection: The Role Of Advanced It Systems In Preventing And Identifying Fraud. *International Journal*, 16(1), 3769-3777
35. Mudusu, S. K. (2026, February 9). AI-augmented data quality engineering. *InfoWorld (Foundry Expert Contributor Network)*.
36. Agrawal, A. M., Gajula, S., Shinde, R. P., Shah, H., & Ghosh, H. (2025, July). Machine Translation for Long Sequences with Enhanced Attention Mechanisms. In *2025 5th International Conference on Electrical, Computer and Energy Technologies (ICECET)* (pp. 1-6). IEEE.
37. Gajula, S. (2025, December). Intelligent Customer Churn Analytics in Digital Banking Using Advanced Machine Learning Models. In *2025 1st*

International Conference on Emerging Trends in Information Systems and Informatics (ICETISI) (pp. 1-6). IEEE.

38. Maturi, S. Y. (2023). Crowdsourced frontier: Unveiling autonomous adversarial cybercapabilities via open AI competition. *International Journal of Intelligent Systems and Applications in Engineering*, 11(1s), 275–284.
39. Maturi, S. Y. Cryptographic Privacy Engines: Practical Multi-Party Protocols For Confidential Database Queries.
40. Sikder, M. Z., Shakil, M. A. I., Ahad, A., Karim, M. F., Intakhab, B., & Islam, D. A. (2025, June). Microwave-Based Detection of Early-Stage Renal Cell Carcinoma Using UHF Range Antenna. In *2025 International Conference on Computer Systems and Technologies (CompSysTech)* (pp. 1-6). IEEE.
41. Manoharan, D. (2024). Governance-Oriented Quality Engineering Framework for Healthcare EDI Modernization. *International Journal of Multidisciplinary on Science and Management IJMSM*, 1(2).
42. Manoharan, D. (2026). Advancing Healthcare EDI Interoperability Through Informatica Cloud B2B Gateway Quality Engineering. Available at SSRN 6385719.
43. Ravishankara, M. (2026, February). PlotChain: Deterministic Checkpointed Evaluation of Multimodal LLMs on Engineering Plot Reading. In *SoutheastCon 2026* (pp. 1-8). IEEE.
44. Doragacharla, V. R. (2026). Building Real-Time Pricing Systems for Modern Retail. Available at SSRN 6451760.
45. Adabala, P. K. (2024). Utilizing predictive analytics to improve efficiency and decision-making in ERP-connected supply chains. *International Journal of Intelligent Systems and Applications in Engineering*, 12(22s), 2465
46. Venkata Ramana, P. (2024). AI-driven predictive analytics in ERP systems for proactive supply chain optimization. *International Journal of Research in Information Technology and Computing*, 8(4).
47. P. Venkata Ramana. (2024). AI-driven predictive analytics in ERP systems for proactive supply chain optimization. *Eudoxus Press Journal*.
48. Srikanth Kavuri. (2025). AI-DRIVEN TEST AUTOMATION FRAMEWORKS: ENHANCING EFFICIENCY AND ACCURACY IN SOFTWARE QUALITY ASSURANCE. *International Journal of Applied Mathematics*, 38(10s), 699–710. <https://doi.org/10.12732/ijam.v38i10s.990>

49. Kavuri, S. (Ed.). (2024). Shift-left and shift-right testing approaches: A practical roadmap for continuous quality in agile and DevOps. *Journal of Information Systems Engineering and Management*, 9(4). <https://doi.org/10.52783/jisem.v9i4.127>
50. Venkata Pavan Kumar Gummadi. (2023). MuleSoft Batch Processing: High-Volume Streaming Architecture. *Computer Fraud and Security*, 50–57. <https://doi.org/10.52710/cfs.886>
51. Venkata Pavan Kumar Gummadi. (2026). Infrastructure Optimization Techniques for Enterprise Integration Platforms: A Comprehensive Analysis. *Computer Fraud and Security*, 37–44. <https://doi.org/10.52710/cfs.875>
52. Venkata Pavan Kumar Gummadi. (2024). API Design and Implementation: RAML and OpenAPI Specification. *Journal of Electrical Systems*, 16(4), 76–85. <https://doi.org/10.52783/jes.9329>
53. Venkata Pavan Kumar Gummadi. (2025). MuleSoft's Role in Advancing Sustainable Digital Infrastructure: An Enterprise Integration Perspective. *Journal of Information Systems Engineering and Management*, 10(62s), 1313–1321. <https://doi.org/10.52783/jisem.v10i62s.13783>
54. Venkata Pavan Kumar Gummadi. (2025). MuleSoft Architectural Paradigms and Sustainability: A Comprehensive Technical Analysis. *Journal of Computer Science and Technology Studies*, 7(12), 534–540. <https://doi.org/10.32996/jcsts.2025.7.12.59>
55. Gajula, S., Bondhala, S., & Margam, M. (2026). Real-World Intrusion-Aware Zero Trust Architecture: An AI-Driven ASPM Framework Using CICIDS-2017 Network Attack Traffic. *2026 IEEE 5th International Conference on AI in Cybersecurity (ICAIC)*, 1–7. <https://doi.org/10.1109/icaic67076.2026.11395835>
56. Majumder, R. Q. (2025). A Review of Anomaly Identification in Finance Frauds Using Machine Learning Systems. *SSRN Electronic Journal*. <https://doi.org/10.2139/ssrn.5267287>
57. Gajula, S. (2025). Ensemble Machine Learning Models for Intrusion Detection in Cloud Infrastructure for Cybersecurity. *2025 International Conference on Artificial Intelligence, Blockchain, Cloud Computing, and Data Analytics (ICoABCD)*, 1–6. <https://doi.org/10.1109/icoabcd67551.2025.11470865>
58. Gajula, S., & Kandula, S. T. R. (2026). Securing Financial Data in Multi-Tenant Clouds Through AI, Blockchain, and Attribute-Based Encryption. *Proceedings of Fifth International*



Conference on Computing and Communication
Networks, 397–419. <https://doi.org/10.1007/978-3->

032-21499-7_33